

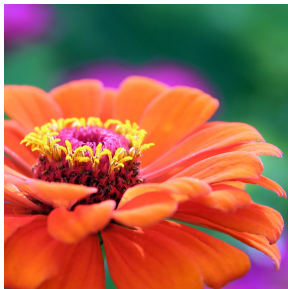
Annuals

A Garden Guide

Annuals are plants which live through one growing season. They can provide **dramatic color** in the garden, and are often planted with perennials and shrubs, or in containers. There are cool season annuals, such as pansies and ornamental kale, which provide color in early spring, and fall into winter. The warm season annuals provide lush drama during summer. Annuals can be wonderful pollinator plants, used as cut flowers, and some are even edible.



One of the keys to growing healthy annuals is **soil preparation**. Most of the soil in Western North Carolina is heavy clay with poor drainage and aeration. When first establishing plants in the ground, it is very important to break up this clay. Soil conditioner, composted cow manure, gypsum and lime are all excellent soil amendments. Mulch is important for preventing erosion, holding in moisture, and improving soil organic matter.



Many of the annuals we grow are available in cell packs or 4" pots. Once your soil is prepared and you are ready to plant, gently loosen the roots of each plant as they are placed in the soil. The traditional safe planting date for tender annuals in this area is Mother's Day. We have many excellent organic fertilizers available to feed your soil and plants.

Deadhead spent blooms to encourage more flowers. Water deeply when first planting, as needed throughout the growing season. Weekly deep heavy soaks are better than constant light watering, to encourage roots to grow deep down into the soil.

Here's some of our favorites:

Cleome

Coleus

Cosmos

Impatiens

Marigold

Nasturtium

Pansy

Portulaca

Salvia

Sunflower

Tithonia

Verbena

Viola

Zinnia

Version 2.1 July 2023



76 Monticello Road
Weaverville, NC 28787
828-645-3937

<https://reemscreek.com/>